

Subject-Supplying of Telescopic sliding & swing Gate for Construction of Outdoor Exhibition and Park Land in Sector 5 and 8 at Moshi ,Pune 412101...

PCNTDA has decide to undertake the work of open Exhibition Center of PIECC and is preparing the estimate for the same. Interested manufacturers /Contractors/suppliers are requested to submit sealed Quotation of following items on or before 3.00 PM on 20 /02/2018.

Sr no.	Description of Item	Estimated Quantity	Unit	Rate	Amount
1	Providing, fabricating, erecting and commissioning Motorized Three Leaf Telescopic Sliding Gate clear opening 15m x 1.8 m ,overall width 22.5m (As per shown in drawing), with rubber safety bar with infrared signal transmission system and including necessary standard Hardware, Base Plate, locking arrangement, etc. including CE certified according to the European Machinery Directive 2006/42/CE and type tested according to standard European Norm 13241-1 Clear Width 5000mm of each leaf, Overall Width 7500mm each leaf *Clear Height 1800mm complete. (As shown in drawing)	27	Sqm.		
2	Providing, fabricating, erecting and commissioning Motorized Two Leaf Telescopic Sliding Gate clear opening 15mX1.80m ,overall width 24.5m (As per shown in drawing), with rubber safety bar with infrared signal transmission system and including necessary standard Hardware, Base Plate, locking arrangement, etc. including CE certified according to the European Machinery Directive 2006/42/CE and type tested according to standard European Norm 13241-1 *Clear Width 7000mm each leaf *Overall Width 9500mm each leaf *Clear Height 1800mm complete (As shown in drawing)	27	Sqm.		
3	Providing, fabricating, erecting and commissioning Motorized Single Leaf Telescopic Sliding Gate clear opening 7.5mX1.80m , overall width 15 m (As per shown in drawing), with rubber safety bar with infrared signal transmission system and including necessary standard Hardware, Base Plate, locking arrangement, etc. including CE certified according to the European Machinery Directive 2006/42/CE and type tested according to standard European Norm 13241-1 *Clear Width 7500mm each leaf *Overall Width 8700mm each leaf *Clear Height 1800mm complete. (As shown in drawing)	13.50	Sqm.		

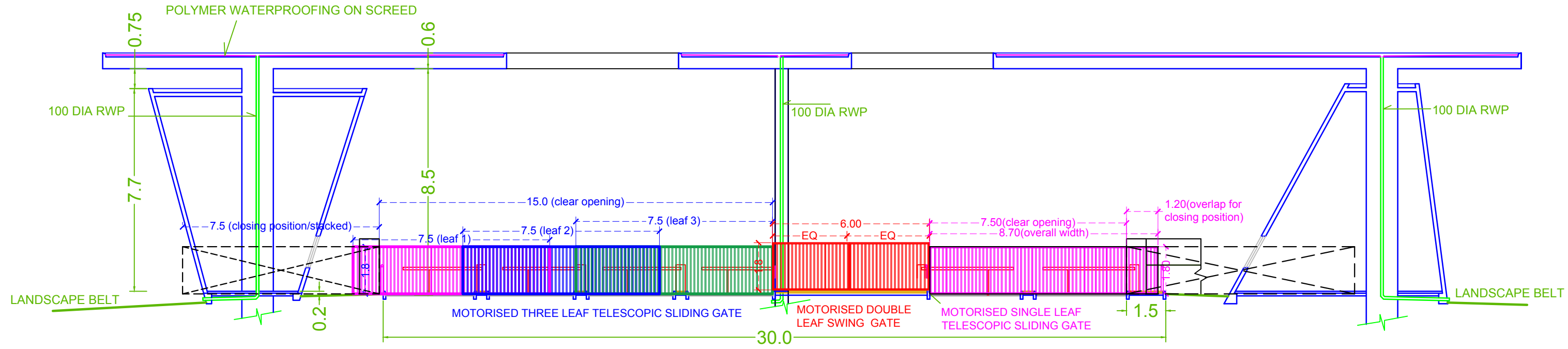
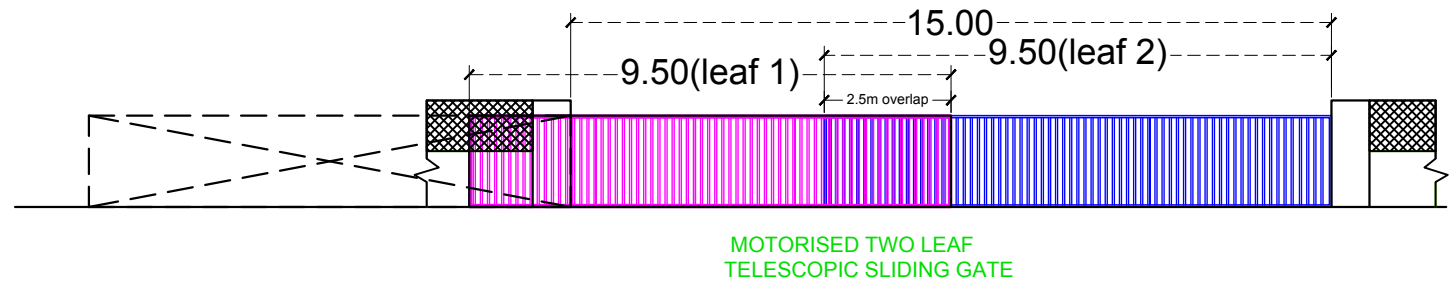
4	Providing, fabricating, erecting and commissioning Motorized Double Leaf Swing Gate 6.0mX1.80m clear opening (As per shown in drawing), with Back up Battery (Battery kit mounted outside control panel) and including necessary standard Hardware, Base Plate, locking arrangement, etc. including CE certified according to the European Machinery Directive 2006/42/CE and type tested according to standard European Norm 13241-1 complete. (As shown in drawing)	10.80	Sqm.		
---	---	-------	------	--	--

Sd-xxx

Executive Engineer
 PIECC
 PCNTDA, Akurdi Pune-44

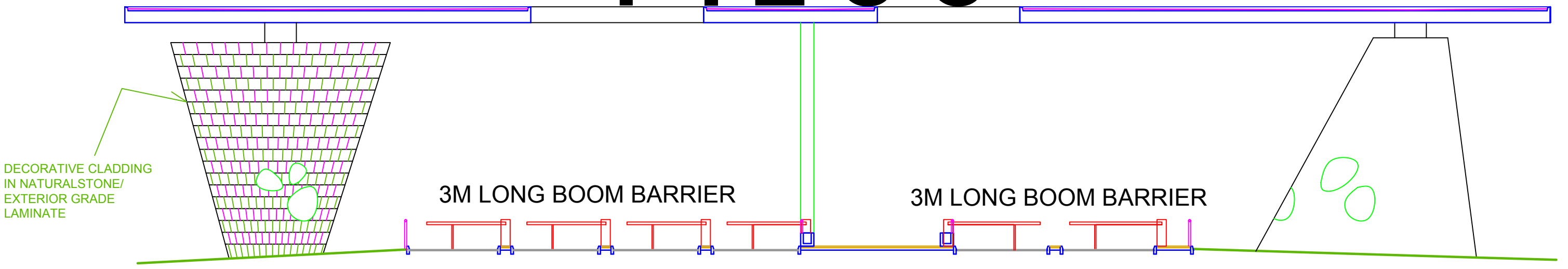
Note:-

- 1) Quotation is for estimate purpose only.
- 2) GST as applicable shall be mentioned separately.
- 3) Rate is inclusive of supply/providing the item on site.



SECTION AA

PIECC

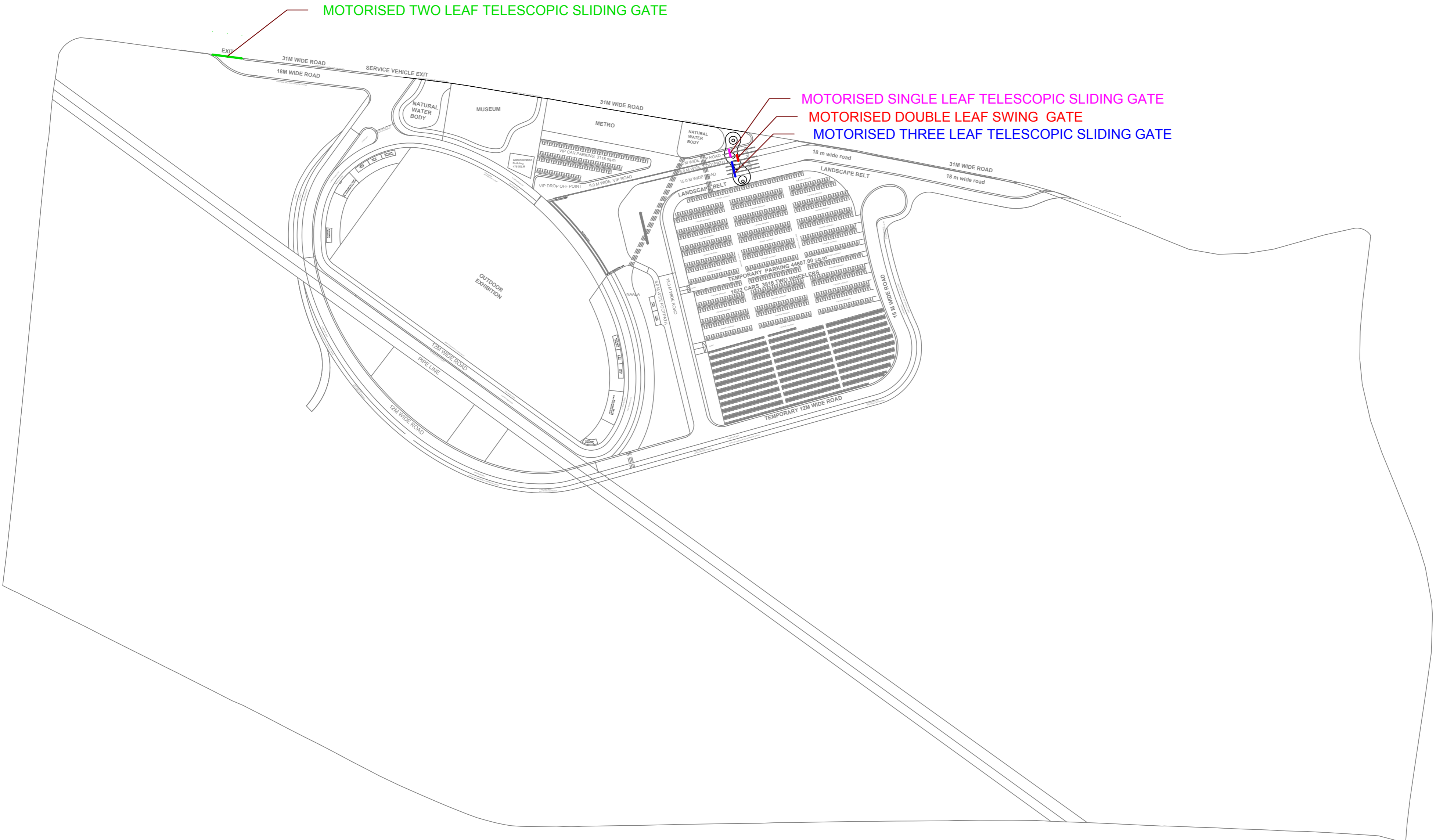


SECTION BB

MOTORISED THREE LEAF TELESCOPIC SLIDING GATE	9.00MX1.80M	1 NOS
MOTORISED SINGLE LEAF SWING GATE	6.00MX1.80M	1 NOS
MOTORISED SINGLE LEAF TELESCOPIC SLIDING GATE	7.50MX1.80M	1 NOS
MOTORISED TWO LEAF TELESCOPIC SLIDING GATE	15.00MX1.80M	1 NOS

GENERAL NOTES
 THIS DRAWING IS SOLE PROPERTY OF LANDMARK DESIGN GROUP AND IS NOT TO BE COPIED OR USED WITHOUT PRIOR PERMISSION.
 ALL DIMENSIONS IN THE DRAWING ARE TO BE READ AND NOT TO BE MEASURED.
 ALL DIMENSIONS SHALL BE CO-RELATED WITH STRUCTURAL AND SERVICE DRAWINGS AND ANY AMBIGUITY SHALL BE IMMEDIATELY BROUGHT TO THE NOTICE OF THE ARCHITECTS BEFORE THE COMMENCEMENT OF WORK.
 THE DRAWING SHALL SUPERSEDE ITS PREVIOUS EDITIONS.
 ALL DIMENSIONS ARE IN MILLIMETERS UNLESS SPECIFIED OTHERWISE.

SPECIFIC NOTES
 ALL LEVELS IN THIS DRAWING ARE UNFINISHED FLOOR LEVELS.
 ALL DIMENSIONS IN THIS DRAWING ARE FROM UNFINISHED SURFACES.



LOCATION OF TELESCOPIC AND SWING GATE

REFERENCES :

PROJECT :
 PROPOSED DEVELOPMENT OF OUTDOOR EXHIBITION/
 PARKLAND AT SECTOR 5 & SECTOR 8, PCNTDA, MOSHI

TITLE :

LOCATION OF GATES

DATE :	22/07/14	CHECKED:	USHA R.
PROJ.NO :	100	SCALE :	N.T.S.
DEALT :	NISHITAN		

Pimpri Chinchwad New
 Town Development
 Authority

LANDMARK DESIGN GROUP
 ARCHITECTS AND INTERIOR DESIGNERS
 'SAI BLUE DIAMOND', GR FLOOR, PLOT NO. 1, C.S. NO. 24,
 PRADHAKARAN, NGCO, PUNE-411044
 PH: 27653550, 27653559
 email - landmark_dg@gmail.com ; landmark_dg@yahoo.com